

Winter Newsletter 2017

December 2017



Issue 2



IMPORTANT DATES:
School will re-open to students on
8 January 2018

Message from our Headteacher

It gives me great pleasure to introduce myself as the new Headteacher of Sheffield Inclusion Centre. I joined the service in September after 25 years of teaching and leading in schools across the city.

As a pupil referral unit (PRU), our core purpose is to educate and support young people that have struggled to remain in mainstream education. By working together with families, carers and all sources of support it is our aim to help all of our students to re-engage with education.

What is achieved at school has a life-long impact. The qualification, skills, and knowledge with which young people leave will help support them through future careers. Education is an important and urgent business and most people only have one shot at it.

That is why I consider the Inclusion Centre to be the most important school in the city; we can offer one more opportunity to be successful. That needs us all to work in close partnership, aim high and keep going.

This newsletter will give you a flavour of the learning and activities that have happened over the last term. Please do take time to read it and celebrate all the successes of your son or daughter.

I look forward to working with you all in the future.

Merry Christmas.

Andy Ireland
Headteacher





Timings for the new school day at our Spring Lane site

The school day for KS3/4 students at Spring Lane

Full Time Students	
8:30 - 8:45am	Breakfast
9:00 - 9.10am	AM Tutorial
9:10 - 10:00am	Period 1
10:00 - 10:50am	Period 2
10:50 - 11.00am	Break
11:00 - 11:50am	Period 3
11:50 - 12:40pm	Period 4
12:40 - 1:10pm	Lunch
1:10 - 1:20pm	PM Tutorial
1:20 - 2:10pm	Period 5
2:10 - 3.00pm	Period 6

Part Time Students

If you are on a part time timetable please follow your personalised timetable.

Students will be expected to be in school to register with their tutor group at **8.45am**.

Breakfast club will be available from **8:15am**.

The school day will finish at 1.25pm on a Monday only and 3.00pm the rest of the week.

School Holidays/Staff Training Days

	<u>School Closure</u>
Christmas and New Year	School will be closed from Friday 22 December to Friday 5 January 2018 inclusive
February Half-term	School will be closed from Monday 19 February to Friday 23 February 2018 inclusive
Easter Holidays	School will be closed from Friday 30 March 2018 to Friday 13 April 2018
Bank Holiday	School will be closed for Bank Holiday Monday 7 May 2018
Spring Bank Holiday	School will be closed from Monday 28 May 2018 to Friday 1 June 2018 inclusive
Summer Holiday	School closes for the Summer Holidays from Friday 20 July 2018



School Uniform

Uniform

All young people attending the Sheffield Inclusion Centre (Spring Lane site) are expected to wear a uniform.

The uniform will consist of a black polo shirt and black trousers. Every student will be provided with a black polo shirt.

Students come back to school on Monday 8 January 2018. We expect students to wear dark/black trousers or skirts and black shoes. Additional items of uniform can be bought at cost price from school, you just need to get in touch.

Uniform gives our students a sense of belonging at SIC and I know that I will be proud to see our students coming into and leaving SIC looking really smart and mature!

If you have any questions about uniform please contact school on 0114 2531988.



Remember additional polo shirts can be purchased from school just get in touch 0114 2531988.



Attendance Information for Parents

SIC attendance target is 95%. Any pupil falling below this will be monitored closely by school. If attendance does not improve parents and pupils will be invited for interviews to explain their poor attendance. This could be with a school Governor, Team Leader or the Attendance Officer. In some cases this could be all three.

Poor attendance = Poor attainment.

The table below sets out the importance and the impact of **attendance** on your child's **attainment**.

Above 97%: less than 12 sessions (6 full days of absence a year)	Excellent attendance. These students will achieve their full potential increasing their life chances.
95%: 20 sessions (10 full days of absence a year)	Very good attendance. These students are likely achieve good grades and have opportunities for college, work or training.
91%: 34 sessions (17 full days of absence a year)	These students are missing more than 3 weeks of a school year. Research has shown that this can result in the loss of a full GCSE grade. This is the difference between a C and a D an A and an A* or a U and a G. Students are unlikely to achieve their potential.
85% and below: 56+ sessions Between Half terms 1-6 (28 full days of absence in a year)	Students in this category are missing more than 6 weeks of school in a year and will find it extremely difficult to catch up with work. Parents of these students are likely to be issued with a Fixed Penalty Notice.
85% and below 48+ sessions between Half Term 1-5 (24 full days of absence in a year)	Students in this category are missing nearly 5 weeks of school in a year and will find it extremely difficult to catch up with work. Parents of these students are likely to be issued with a Fixed Penalty Notice.
For every full week that a student attends school their attendance will increase by 2.5%	



Attendance Information continued

Attendance Policy and Procedures:

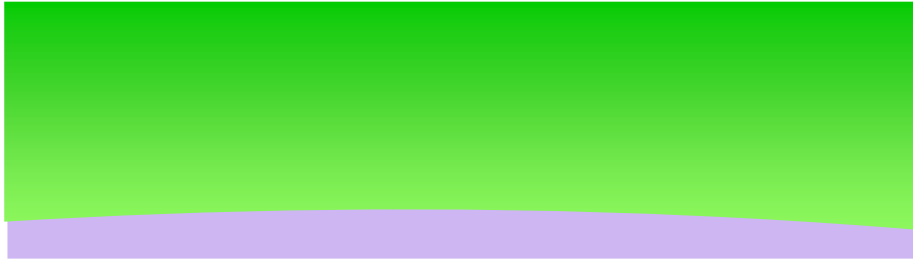
Parental responsibilities:

- Ensure your child is present and punctual for each school day. School starts at 08.45am
- Inform the school immediately by telephone or text on 0114 2531988 if your child will be absent from school or email enquiries@inclusion.sheffield.sch.uk
- Provide medical evidence for absences where appropriate
- Respond immediately to any texts or letters sent home with regards to your child's absence
- Ensure all medical appointments are made outside of school hours where possible
- Ensure no holidays/leave are booked during term time
- For long term absence parents should liaise with their child's Team Leader and arrange for work to be completed to minimise the disruption of the child's learning
- Parents should work collaboratively and cooperatively to support their child in improving their attendance and engage with the school at meetings such as attendance panels
- Where a student needs to leave the school site during the day, parents/carers should provide a written letter and arrange to collect their child from school
- Parents/carers should support school and ensure their child leaves home in plenty of time to arrive at school for 8.45am

As a school we are committed to providing the best possible education for your child in order that they can succeed in the future. Like you, we want your child to be safe, happy and healthy. Please work with us to ensure your child has the best start in life by ensuring that they are in school every day.

Moving forward into the next academic year; we will continue to work closely with the Local Authority to ensure we have robust systems in place to highlight concerns around attendance and respond to any issues with your child's attendance in an appropriate and speedy manner.

As a parent/carer, it is your responsibility, as required by the Education Act 1996, Section 444, to ensure that your child is in school every day. Should your child not attend regularly, prosecution proceedings may be instigated against you. This could require you to attend Magistrates' Court where fines of up to £1,000, on each parent/carer for each child, can be imposed and/or a term of imprisonment of up to 3 months.



Thank you message from a parent...

We have had lots of lovely messages from parents — an example below:

“To all staff at Spring Lane. Thank you to all who supported and believed in my son, we really appreciate it. We feel he’s learnt from the situation and is able to move forward thanks to everyone who has been involved”.

Edlounge

Remember to encourage your child to login to their Edlounge account:

<http://sheffieldinclusion2.edlounge.com>

Fair Access Panel

10 students have successfully gained places in their new schools.

We would like to wish them all good luck!

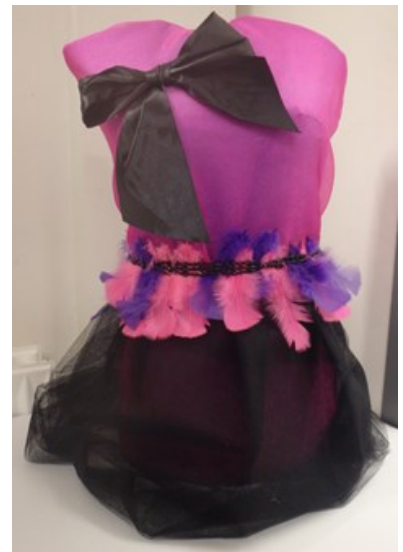
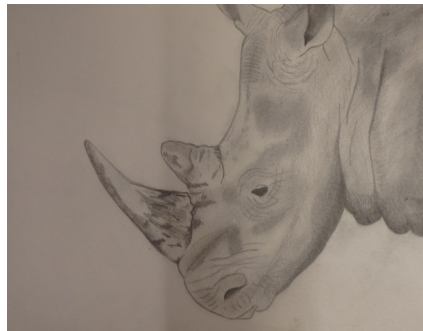
Website

Our school website address is:

www.inclusion.sheffield.sch.uk



Student's Work



A selection of GCSE Art work

SEND Coffee Morning

Where: Sheffield Inclusion Centre

When: Tuesdays 9-11am.

Contact: Safeena Bahar (SENDCo)

TERM TIME ONLY

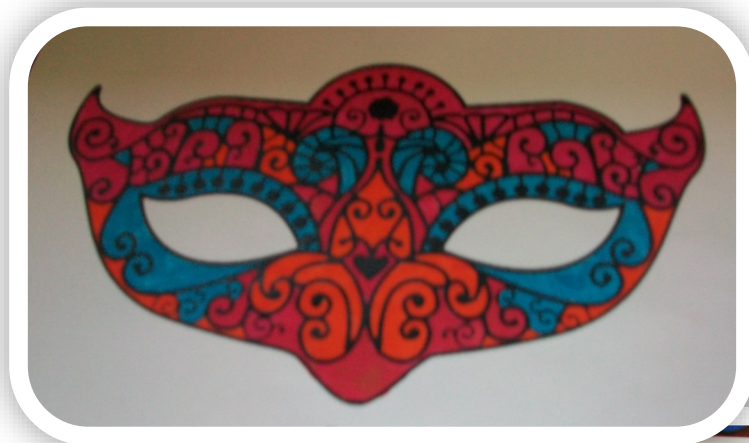


A great way for you to meet other parents who are caring for a child with a special need or disability, to make new friends, gain information and have a listening ear at a regular meeting place.



Team Art

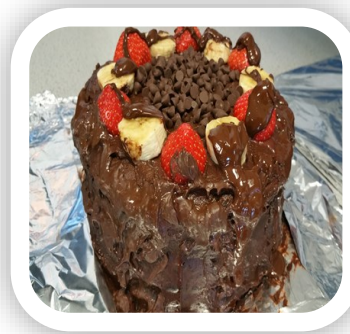
Outreacher Allison Hession and Art Teacher Rachel Swainson devised a project for a Year 7 outreach student on fashion. We think these are catwalk ready!





Bake Off

Congratulations to Aqib, Samsul, Justine and Morgan on representing the Sheffield Inclusion Centre in a bake off competition and gaining second place. The competition involved competing against 20+ Special Schools from Early Years, Primary and Secondary settings. The criteria was taste and presentation, the students were judged by Claire from Capita Education who works with Special Schools across the City. The students will all be given a certificate for participating, an individual prize and vouchers to purchase something they feel the school needs. A fantastic achievement for all students who entered!!!



We would like to take this opportunity to wish everyone a relaxing Christmas break and a Happy New Year!



Reminder

Remember the new school term starts on
Monday 8 January 2018

